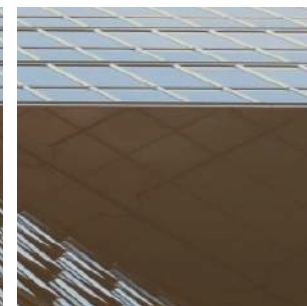


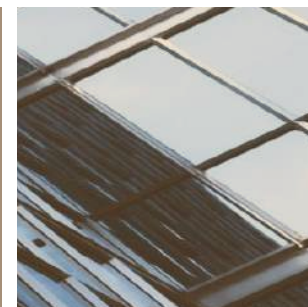
Global  
Project  
Management



[www.  
allgpm.  
es](http://www.allgpm.es)

## Focused on your project

At **aLL Global Project Management** we put at your disposal all our experience in the real estate and construction sectors.



The background of the slide is a grayscale photograph of a modern building's facade, characterized by sharp, angular architectural elements and large windows. Overlaid on this image are numerous white and orange rectangular outlines of varying sizes, some of which are interconnected by thin orange lines, creating a complex, abstract pattern that suggests a project plan or a network of interconnected spaces.

### **aLL GPM**

**After years spent using a holistic approach for every new project, effectively managing each phase.**

**At **aLL Global Project Management** we have gained extensive experience in both the property and construction sectors for your benefit.**



# Index

About us	06
Team	07
Our delegations	10
Five reasons to trust in aLL Global Project Management	13
Services	15
<hr/>	
PROJECT MANAGEMENT	17
GLOBAL ENGINEERING	22
CONSTRUCTION MANAGEMENT	29
WORKS EXECUTION MANAGEMENT	32
PROJECT MONITORING	37
ENGINEERING SERVICES	44
DUE DILIGENCE AND ENVIRONMENTAL CERTIFICATIONS	51
<hr/>	
Sustainability in aLL GPM	55
Our clients	56



# Team

## Founding Partner José Nievas Vaquero

He defines himself as analytical and persistent, as well as enterprising and enthusiastic about every new project.

He analyses, plans, executes and assesses a wide range of projects in his different fields of expertise: Industrial Technical Engineer (UPC), Master's degree in Development, Property and Planning Management (UAB and UB), Auditor, estate agent qualification (Spanish API) and background in Marketing (EOI and UB).

He has been General Manager and Technical Manager of various property development companies, and a pioneer in project management in property construction and the automotive industry for over 30 years.



## Co-Founder Partner Miguel Ángel Berengué

He defines himself as a tenacious and meticulous person who tackles projects with great care.

He is a Technical Architect with a Master's degree in Management of Property and Construction companies. He has worked in project management for over 25 years in property-related companies within the "La Caixa" group. He has been Project Manager and Technical Manager in various developers and project management service companies.

In 2009, he joined **aLL Global Project Management** as managing partner, using his great "know how" in the real state sector and as bank developer. Located in six Spanish towns providing coverage at national level.

## About us

### aLL Global Project Management

We are a company specialized in integrated management of property projects. Since 2005 we have partnered with services companies throughout Spain, and with investment funds and developers.

We excel at teamwork and we guarantee the lowest risk, the most efficient coordination and the best results.



# Our team, our main asset

## More than 30 professionals

At **ALL Global Project Management** we also have a multidisciplinary team of over thirty professionals, including Architects, Technical Architects, Engineers and Economists, all fully committed to and involved in every one of our projects.



Technical Direction  
**Laura de la Fuente**



Admin. Management  
**Marta González**



EAST office  
**Rafael Reche**



CENTER and  
CANARY ISLANDS office  
**Sergio Ruiz**



SOUTH office  
**Pedro Sánchez**



LEVANTE office  
**Mari Cruz Sánchez**



NORTH office  
**Cristina Lacasa**



NORTHWEST office  
**Cristina Dominguez**



# Coverage at national level

**OFFICE A CORUÑA**  
C. Copérnico, 6  
15008 - A Coruña  
(+34) 881 065 872



**OFFICE VALLADOLID**  
Plz. Mayor, 8  
47001 - Valladolid  
(+34) 910 782 318



**OFFICE MADRID**  
C. Poeta Joan Maragall, 23  
28020 - Madrid  
(+34) 911 890 564



**OFFICE PAMPLONA**  
C. Arcadio María Larraona, 1  
31008 - Pamplona  
(+34) 948 203 156



**OFFICE BARCELONA**  
Avda. Corts Catalanes, 9  
08173 - Sant Cugat del Vallès  
(+34) 935 530 880



**OFFICE VALENCIA**  
Avda. Cortes Valencianas, 39  
46015 - Valencia  
(+34) 935 530 880



**OFFICE MÁLAGA**  
Plz. de la Solidaridad, 12  
29002 - Málaga  
(+34) 951 941 769



**OFFICE CANARY ISLANDS**  
38632 - Tenerife  
(+34) 935 530 880



Islas Canarias

# Offices action area

Established in **8 cities** in Spain  
providing coverage throughout the  
national territory



# Five reasons to trust in **aLL Global Project Management**



Holistic approach  
to the project



Streamlined costs  
and deadlines



Maximum commit-  
ment to your project



We work to the  
highest standards  
of quality



Highly qualified  
professionals



# Our Services

**Project  
Management**

**Global  
Engineering**

**Project  
Monitoring**

**Construction  
Management**



**Engineering  
Services**

**Due Diligence and  
Environmental  
Certifications**

**Works  
execution  
Management**

*We make it possible*



# Project Management

At **aLL Global Project Management**, managing construction projects is our passion. We are heavily involved right from the start and once the overall design of the project is ready, we guarantee that the targets set for each phase will be met, in terms of deadlines, quality of finishes and budget.

We will advise and provide coordination and technical supervision from the beginning of the project, through the feasibility study, and oversee the whole process until completion and even the after-sales service.

In the initial phase of the project design we assess which is the most suitable product for the current market. Without sacrificing any of the quality required by the end client, we guarantee you a good return of investment by staying within the established budget.

**Feasibility study for the project**

**General and economic planning**

**Economic tender and financial forecast**

**Technical and economic monitoring during the project**

**Administrative transactions**

**After-sales management**





## Santiago de Compostela (La Coruña)

- **Location:**  
Avda. da Liberdade, 28
- **Type of project:**  
Multi-family building.  
47 apartments, commercial premises, storage rooms and parking.

■ **Developer:**  
Inmocritería Caixa, SAU.



**M² Built:** 9.315 m²

**Const. Cost** 7.440.000



## Girona

- **Location:**  
C/ Joaquim Vayreda, 54
- **Type of project:**  
Multi-family building.  
12 apartments, commercial premise, parking.

■ **Developer:**  
Inmocritería Caixa, SAU.



**M² Built:** 1.425 m²

**Const. Cost** 1.680.000



## Pamplona (Navarra)

- **Location:**  
C/ Las Blancas, 1. Soto de Lezkairu
- **Type of project:**  
Multi-family building.  
53 apartments, parking, storage rooms and commercial premises.

■ **Developer:**  
Inmocritería Caixa, SAU.



**M² Built:** 1.425 m²

**Const. Cost** 1.680.000



## Vallecas (Madrid)

- **Location:**  
Avda. la Gabia, 16
- **Type of project:**  
Multi-family building.  
98 apartments, parking and commercial premises.

■ **Developer:**  
Servihabitat XXI, SA.



**M² Built:** 11.680 m²

**Const. Cost** 4.790.000



## Tembleque (Toledo)

- **Location:**  
C/ Escuelas, 2.
- **Type of project:**  
Multi-family building.  
8 apartments, parking and storage rooms.

■ **Developer:**  
Mosacata, SL



**M² Built:** 1.050 m²

**Const. Cost** 402.000



## Irun (Guipuzkoa)

- **Location:**  
C/ Irurzunzar.
- **Type of project:**  
Single-family homes.  
7 households.

■ **Developer:**  
Aliseda, SAU.



**M² Built:** 2.390 m²

**Const. Cost** 275.000





Melilla

- **Location:**  
Avda. Juan Carlos I, 28.
- **Type of project:**  
Multi-family building.  
9 apartments, offices and commercial premise.
- **Developer:**  
Servihabitat XXI, SA.
- **M² Built:** 1.115 m²
- **Const. Cost** 874.000



Monda (Málaga)

- **Location:**  
Monda.
- **Type of project:**  
Multi-family building.  
14 apartments and storage rooms.
- **Developer:**  
Solvía
- **M² Built:** 960 m²
- **Const. Cost** 179.000



Vigo (Pontevedra)

- **Location:**  
C/ Rosalía de Castro, 65
- **Type of project:**  
Multi-family building.  
36 apartments, commercial premise and parking.
- **Developer:**  
Sareb
- **M² Built:** 6.520 m²
- **Const. Cost** 4.836.000



Barcelona

- **Location:**  
C/ Rubens.
- **Type of project:**  
Multi-family building.  
20 aparments, parking and storage rooms.
- **Developer:**  
Inmocriteria Caixa, SAU.
- **M² Built:** 2.980 m²
- **Const. Cost** 2.150.000



Sanxenxo (Pontevedra)

- **Location:**  
Avda. Luis Rocafort, 25-27.
- **Type of project:**  
Multi-family building.  
39 apartments, parking, storage rooms and swimming pool.
- **Developer:**  
Inmocriteria Caixa, SAU.
- **M² Built:** 3.550 m²
- **Const. Cost** 3.917.000



Urduliz (Vizcaya)

- **Location:**  
Área Abadene.
- **Type of project:**  
3 Multi-family buildings.  
78 apartments, parking and storage rooms.
- **Developer:**  
Inmocriteria Caixa, SAU.
- **M² Built:** 10.800 m²
- **Const. Cost** 9.800.000







# Global Engineering

As a result of the global knowledge of the entire construction process involved in a real estate promotion, **aLL Global Project Management** has developed an innovative product together with its main clients, it is called Global Engineering.

It consists of the creation of a technical project area that functions as a single multidisciplinary agent, which acts in close collaboration with the architect from the preliminary phases of the project.

Global Engineering is responsible of all the engineering projects: structures, mechanical, electrical and thermal installations, telecommunications, activity projects, etc. Together with our technical office and our architectural technicians / project managers, they draw up the measurements and carry out the tender for the work; carrying out the integration in the model of all the projects developed in BIM.

All together results in a significant reduction in terms of cost and lead time due to the use of a single multidisciplinary team, with a perfect knowledge in all the areas, that will prepare the project; measurements; the bidding and the technical management of the works.

- Leader and global technical coordinator of the project
- Pre-project review and basic architecture project
- Execution of executive project: Structure - Facilities
- Engineering projects: Garage – Swimming pool – Thermic installations, etc.

- Measurements and measurement integrations - Budget
- Bidding and work contract
- Management the works and facilities execution
- Legalization of works and facilities – CFO - LPO





## Pozuelo de Alarcón (Madrid)

**Location:**  
C/ Norte con C/ Doctor Cornago.

**Type of project:**  
Multi-family building.  
27 apartments, storage rooms, parking and swimming pool.

**Developer:**  
Avegam Pozuelo, SL



**M² Built:** 4.890 m²

**Const. Cost** 8.250.000



## Arona (Santa Cruz de Tenerife)

**Location:**  
C/ Tórtola, 6, urb. Palm-Mar.

**Type of project:**  
Building of 5 high standing villas and 10 commercial premises.

**Developer:**  
Lemwey Inversiones, SL



**M² Built:** 5.870 m²

**Const. Cost** 5.217.000



## Madrid

**Location:**  
C/ Antonio López, 191-193.

**Type of project:**  
Multi-family building.  
84 apartments, parking, storage rooms and commercial premises.

**Developer:**  
Vía Ágora Buildings, SL



**M² Built:** 13.780 m²



## Madrid

**Location:**  
C/ Estanislao Pérez Pita, 68.

**Type of project:**  
Multi-family building.  
98 apartments, parking, storage rooms, swimming pool and commercial premises.

**Developer:**  
Ingenium Residencial, SL



**M² Built:** 13.940 m²

**Const. Cost** 16.102.000



## Boadilla del Monte (Madrid)

**Location:**  
Avda. Condesa Chinchón, 6.

**Type of project:**  
Multi-family building.  
14 apartments, parking, storage rooms and swimming pool.

**Developer:**  
Ingenium Residencial, SL



**M² Built:** 4.370 m²

**Const. Cost** 3.476.000



## Puente de Vallecas (Madrid)

**Location:**  
C/ Salvador Martinez, 14.

**Type of project:**  
Multi-family building.  
9 apartments.

**Developer:**  
Aurence



**M² Built:** 920 m²

**Const. Cost** 975.000





# Valladolid

Location:

Paseo Arco del Ladrillo s/n.

Type of project:


Multi-family building.  
78 apartments, parking, storage rooms and swimming pool.

Developer:

Arqura Homes F.A.B.

M² Built: 16.570 m²

Const. Cost 9.995.000





# Vigo

Location:

C/ Vázquez Varela, 51.

Type of project:


Multi-family building.  
30 apartments, parking, storage rooms and commercial premises.

Developer:

Arqura Homes F.A.B.

M² Built: 8.825 m²

Const. Cost 5.298.900





# Lleida

Location:

Avda. de Miquel Batllori.

Type of project:


Multi-family building.  
102 apartments, parking, swimming pool and commercial premises.

Developer:

Arqura Homes F.A.B.

M² Built: 17.335 m²

Const. Cost 11.865.000





# Llinars del Vallés (Barcelona)

Location:

C/ Collsabadell, 91-97.

Type of project:


Multi-family building.  
60 apartments, parking and swimming pool.

Developer:

Arqura Homes F.A.B.

M² Built: 7.640 m²

Const. Cost 5.413.000





# Segovia

Location:

C/ Sexmo de Tajuña.

Type of project:


Multi-family building.  
24 apartments, parking, storage rooms and studio.

Developer:

Arqura Homes F.A.B.

M² Built: 4.700 m²

Const. Cost 2.648.000





# Burlada (Navarra)

Location:

C/ Paris esq. C/ Dublín.

Type of project:


Multi-family building.  
95 apartments, parking and storage rooms.

Developer:

Arqura Homes F.A.B.

M² Built: 17.600 m²

Const. Cost 9.815.000





# Construction Management

Having control of the entire construction process allows, in addition to ensuring quality, to make, if necessary, changes to improve the product to adapt to the changing reality of the market.

Thanks to the Construction Manager tool, the **aLL Global Project Management** technical team can optimize construction costs and deadlines.

Project revision

Contracting package or working with single general contractor

Construction planning and coordination of trades

Progress monitoring

Financial, deadlines and quality controlling

After-sales management





Figueruelas (Zaragoza)

- **Location:**  
Plot 2. Industrial park 8.
- **Type of project:**  
Industrial warehouse with offices and outdoor field.
- **Developer:**  
Schmitz Cargobull

M<sup>2</sup> Built: 95.000 m<sup>2</sup>  
Const. Cost 15.000.000



Arona (Santa Cruz de Tenerife)

- **Location:**  
Avda. del Palm-Mar 1, urb. Palm Mar.
- **Type of project:**  
7 Multi-family building.  
132 apartments, parking and outside urbanization and landscaped areas.
- **Developer:**  
Lemwey Inversiones, SL

M<sup>2</sup> Built: 20.580 m<sup>2</sup>  
Const. Cost 23.265.000



Sant Vicenç de Castellet (Barcelona)

- **Location:**  
Calles Goya, Casanovas y Colom.
- **Type of project:**  
Multi-family building.  
28 apartments and parking.
- **Developer:**  
N.V. Promociones



N.V. PROMOCIONES



Cadrete (Zaragoza)

- **Location:**  
Santa Fe neighbourhood. Area Sisallate.
- **Type of project:**  
Residential Complex with 29 luxury houses.





# Works Execution Manager

At aLL Global Project Management, the Construction Execution Department represents one of the most important activities within the building sector, supported by the vast experience of its specialized technical team that takes part in a wide variety of works and construction systems. We have extensive experience in the development of sustainable buildings and a broad vision of all building disciplines.

At the beginning we carry out an audit of the documentation, an analysis of the project and during the works, we control and verify the correct execution of the project according to the technical suitability evaluations. In parallel, we propose a follow-up of the economic evolution of the work until its closure, as well as compliance with the planning.

The Quality Control of the entire construction process is one of the inherent points of the Works Execution Manager activity from the beginning of the works until its completion, carrying out a verification of the start-up process and operational tests of the facilities.

Audit	Periodic status reports
Improvement proposals	Process quality control and commissioning
Monitoring of economic evolution	Implementation of sustainable certificates
Planning compliance	







Pozuelo de Alarcón (Madrid)

■ **Location:**  
C/ Julia Díaz Olalla, 5.



■ **Type of project:**  
Multi-family building.  
47 apartments, parking, storage rooms and swimming pool.

■ **Developer:**  
Arqura Homes F.A.B.



**M² Built:** 10.290 m²  
**Const. Cost** 7.124.000



Viladecavalls (Barcelona)

■ **Location:**  
C/ Cardener, 5-19 y 27-29.

■ **Type of project:**  
Single family buildings.  
10 households.

■ **Developer:**  
Solvia



**M² Built:** 3.600 m²  
**Const. Cost** 1.200.000



San Sebastián de los Reyes (Madrid)

■ **Location:**  
C/ Ciruelos, 1-3.

■ **Type of project:**  
Multi-family building.  
97 lofts + 2 blocks of 17 apartments.

■ **Developer:**  
Argis Living



**M² Built:** 11.600 m²  
**Const. Cost** 9.000.000



Torrejón de Ardoz (Madrid)

■ **Location:**  
Aldovea.

■ **Type of project:**  
Multi-family building.  
121 apartments, parking, storage rooms, swimming pool and paddle.

■ **Developer:**  
STAY by Kronos



**M² Built:** 19.189 m²  
**Const. Cost** 14.140.000



Mijas (Málaga)

■ **Location:**  
C/ Acequia del Real, s/n.



■ **Type of project:**  
Multi-family building.  
40 apartments, parking, storage rooms and swimming pool.

■ **Developer:**  
Arqura Homes F.A.B.



**M² Built:** 3.890 m²  
**Const. Cost** 3.420.000



Alovera (Guadalajara)

■ **Location:**  
C/ Edgar Naville.

■ **Type of project:**  
Multi-family building.  
170 apartments, parking, storage rooms and swimmig pool.

■ **Developer:**  
Neinor Homes.



**M² Built:** 32.295 m²  
**Const. Cost** 16.350.000



# Project Monitoring

Through our project monitoring service our team of experts at **aLL Global Project Management** provides ongoing monitoring, without interfering in management and decision-making.

The aim is to provide useful, independent, executive-level information on the progress of the project in real time. We conduct a comprehensive examination to detect the main risks. This enables us to implement the appropriate corrective measures and draw up a monitoring plan adapted to each project.

Thus, you can make decisions in advance, based on reliable and impartial information about the process.

Exhaustive study of risk

Application of corrective measures

Preparation of an adapted monitoring plan

Decision making





Benalmádena (Málaga)

■ **Location:**  
C/ Aneto, s/n.

**Popular**  
Grupo Santander

■ **Type of project:**  
Multi-family building.  
133 apartments, parking, outside urbanization and swimming pool.

■ **Developer:**  
Vía Célere Desarrollos inmobiliarios, SA



**M² Built:** 28.125 m²  
**Const. Cost** 13.490.000



Torrox (Málaga)

■ **Location:**  
Carretera de Almería, 31.

**Santander**

■ **Type of project:**  
2 Multi-family buildings.  
108 apartments, parking, storage rooms and swimming pool.

■ **Developer:**  
Vía Célere Desarrollos inmobiliarios, SA



**M² Built:** 12.460 m²  
**Const. Cost** 10.276.000



Oleiros (La Coruña)

■ **Location:**  
Rua Manuel Gutiérrez Mellado.

**Popular**  
Grupo Santander

■ **Type of project:**  
Multi-family building.  
46 apartments, parking, storage rooms and swimming pool.

■ **Developer:**  
Gestilar



**M² Built:** 10.930 m²  
**Const. Cost** 6.580.000



Pamplona (Navarra)

■ **Location:**  
Avda. Juan Pablo II. Lezkairu

**BBVA**

■ **Type of project:**  
Multi-family building.  
98 apartments, inside urbanization and parking.

■ **Developer:**  
Metrovacesa, SA



**M² Built:** 20.060 m²  
**Const. Cost** 16.115.000



San Juan de Aznalfarache (Sevilla)

■ **Location:**  
Avda. de Europa, 187.

**Popular**  
Grupo Santander

■ **Type of project:**  
Multi-family building.  
171 apartments, parking, storage rooms and swimming pool.

■ **Developer:**  
Activitas Inversión Inmobiliaria



**M² Built:** 26.135 m²  
**Const. Cost** 13.950.000



Arganda del Rey (Madrid)

■ **Location:**  
C/ del Ferrocarril del Tajuña, 3.

**Popular**  
Grupo Santander

■ **Type of project:**  
Multi-family building.  
141 apartments, parking and swimming pool.

■ **Developer:**  
Iniciativa Hábitat Hogar



**M² Built:** 25.420 m²  
**Const. Cost** 13.660.000





Rivas Vaciamadrid (Madrid)

- Location:
ABANCA

Avda. Arco Iris, sector cristo de Rivas.
- Type of project:

Single-family buildings.  
56 apartments, swimming pool and outside urbanization.
- Developer:

Jarama Desarrollos Inmobiliarios

- M² Built: 5.040 m²

Const. Cost 11.058.000



Arganda del Rey (Madrid)

- Location:
Popular

C/ Miguel Chicote, 13.
- Type of project:

Multi-family building.  
56 apartments, parking, storage rooms and swimming pool.
- Developer:

Grupo Fogesa

- M² Built: 7.820 m²

Const. Cost 6.340.000



Vilafranca del Penedés (Barcelona)

- Location:
BBVA

C/ Ferran, 67.
- Type of project:

Multi-family building.  
23 apartments, parking, storage rooms and swimming pool.
- Developer:

Rapejun

- M² Built: 3.615 m²

Const. Cost 2.330.000



Sant Esteve de Palautordera (Barcelona)

- Location:
BBVA

C/ Nou, 17.
- Type of project:

Multi-family building.  
26 apartments, parking and storage rooms.
- Developer:

Palaurba, SL
PALAURBA, S.L.
- M² Built: 3.630 m²

Const. Cost 3.740.000



Madrid

- Location:
Popular

C/ General Oraá, 9.
- Type of project:

Multi-family building.  
12 high standing apartments and parking.  
Integral building rehabilitation.
- Developer:

Platinum Estates

- M² Built: 5.300 m²

Const. Cost 6.280.000



Zarzalejo de Arroyomolinos (Madrid)

- Location:
ABANCA

C/ Oropesa y Peñíscola.
- Type of project:

Single-family buildings.  
24 apartments, children's area and swimming pool.
- Developer:

Grupo Inmobiliario Hermafer

- M² Built: 5.575 m²

Const. Cost 2.880.000



# Professional alliance agreements with appraisers



**INVERSIONES E HIJOS, SL**  
16 apartments  
Torrente - VALENCIA



**METROVACESA, SA**  
99 apartments  
MÁLAGA



**CASES I HABITATGE, SL**  
20 apartments  
Albal - Valencia



**GTI, SL**  
Single-family homes  
ALICANTE



**GUACIMARA, SL**  
6 Single-family homes  
Santa Cruz de Tenerife  
LAS PALMAS DE GRAN CANARIA



**DOMIO MALILLA, SL**  
49 apartments  
ALICANTE



**CONSTRUCCIONES STRABAC, SL**  
29 apartments  
Torrevieja - ALICANTE



**DESARROLLOS ENTORNO NORTE, SL**  
9 apartments  
MURCIA

  
**Euroval**

**gesvalt®**

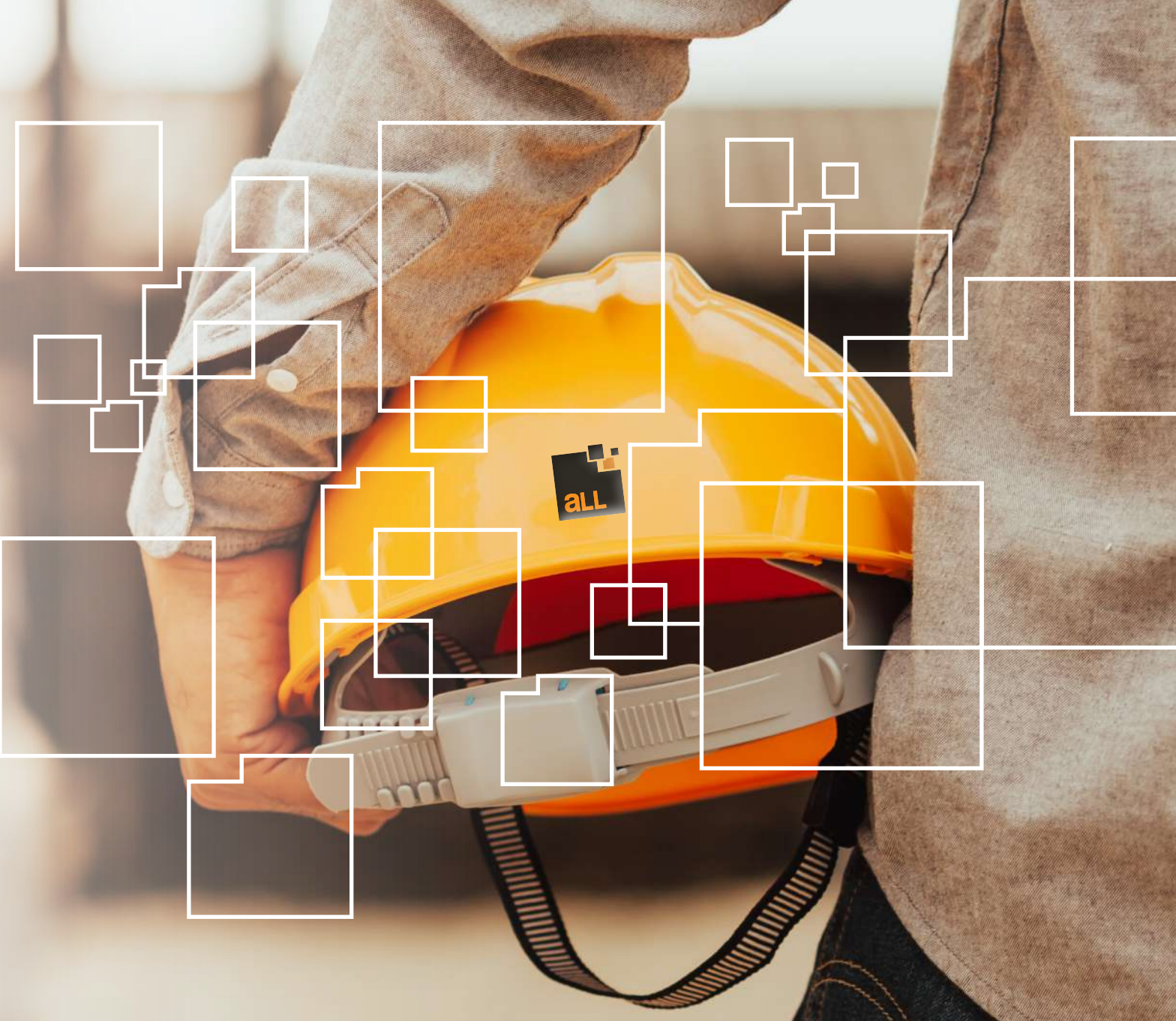




# Engineering Services

**all Global Project Management** has an experienced and qualified technical team to take on and lead engineering and architectural projects, which allows us to combine the concept of quality with the necessary control of costs and deadlines, always thinking globally.

Engineering, installations and activity plans
Basic or construction plans
Installation and renovation plans
Instalaciones y rehabilitación de inmuebles
Measurements and budgets
Works Management
Report Due Diligence
Administrative and registry legalizations
After-sales management







Barcelona

- **Location:**  
Pz. de Gas, 1 (Edificio Torre Marenstrum).
- **Type of project:**  
Offices on floors 1 to 5.
- **Service:**  
Fit Out. Coworking implementation.
- **Developer:**  
Utopicus

utopicus

M² Built: 3.000 m²  
Const. Cost 1.600.000



Madrid

- **Location:**  
Paseo de la Habana, 9-11.
- **Type of project:**  
Offices on basement, ground and first floor.
- **Service:**  
Fit Out. Coworking implementation.
- **Developer:**  
Utopicus

utopicus

M² Built: 5.747 m²  
Const. Cost 6.604.000



Figueruelas (Zaragoza)

- **Location:**  
Plot 2. Industrial park 8.
- **Type of project:**  
Offices and outdoor field.
- **Service:**  
Architecture and engineering project.  
Engineering direction.
- **Developer:**  
Schmitz Cargobull

SCHMITZ  
CARGOBULL



Madrid / Barcelona

- **Location:**  
Avda. de Europa, 14, Madrid.  
C/ Poeta Joan Maragall, 23. Alcobendas, Madrid.  
Paseo de Gracia, 21, Barcelona.
- **Type of project:**  
Business Centers.
- **Service:**  
Activity legalization project.
- **Developer:**  
Networkia

NETWORKIA  
Business Center



Barcelona/Valencia/Navarra

- **Location:**  
Carretera Martorell, 63-73. Sant Andreu de la Barca (Barcelona).  
Avda. de la Foia, 24-32. Almussafes (Valencia).  
C/ Comunidad Foral de Navarra, 1. Tudela (Navarra).
- **Type of project:**  
Industrial Complexes.
- **Service:**  
Due Diligence. Acquisition.
- **Developer:**  
Solvía

Solvía



Colera (Girona)

- **Location**  
C/ Cap de Creus y C/ Villa de Llançá.
- **Type of project:**  
Single-family homes.  
16 households with parking.
- **Service:**  
Construction management and engineering projects.
- **Developer:**  
Aliseda

aliseda  
Inmobiliaria

M² Built: 2.475 m²  
Const. Cost 1.200.000





El Cañaveral (Málaga)

- **Location:**  
C/ Centauro.
- **Type of project:**  
Multi-family building.  
141 apartments, parking, storage rooms and green areas.
- **Service:**  
Project audit.
- **Developer:**  
Neinor Homes



M² Built: 9.375 m²  
Const. Cost 9.844.000



Eibar (Guipuzkoa)

- **Location:**  
C/ Blas Etxebarria, 3.
- **Type of project:**  
Multi-family building.  
82 apartments, parking and storage rooms.
- **Service:**  
Project audit.
- **Developer:**  
Neinor Norte, SL



M² Built: 15.110 m²  
Const. Cost 10.219.300



Zorrozaurre (Bilbao)

- **Location:**  
Plot RD-1, PEOU.
- **Type of project:**  
Multi-family building.  
160 apartments, parking, storage rooms and commercial premises.
- **Service:**  
Project audit.
- **Developer:**  
Neinor Homes



M² Built: 25.664 m²  
Const. Cost 17.515.000



Valencia

- **Location:**  
C/ E.P. Jaraco, 1-5.
- **Type of project:**  
Multi-family building.  
71 apartments, parking and storage rooms.
- **Service:**  
Project audit.
- **Developer:**  
Promociones Habitat, SAU



M² Built: 7.664 m²  
Const. Cost 5.015.000



Torremare (Málaga)

- **Location:**  
Camino de la Térmica, 36.
- **Type of project:**  
Multi-family building.  
98 apartments, parking, storage rooms and commercial premises.
- **Service:**  
Project audit.
- **Developer:**  
Promociones Habitat, SAU



M² Built: 17.763 m²  
Const. Cost 16.558.770



Oviedo / Barcelona

- **Location:**  
Plot 18 y 19-A of Partial Plan 2. Monte Cerrao (Oviedo).  
C/ Prim con C/ Baldrich, Terrassa (Barcelona).
- **Type of project:**  
Urban ground.
- **Service:**  
Technical Due Diligence - Urban.
- **Developer:**  
Promociones Habitat, SAU



M² Oviedo: 6.026 m²  
M² Terrassa: 30.690 m²



# Environmental Due Diligence

Analysis of the sustainability criteria implemented in the building, improvement strategies and pre-evaluation for environmental certification.

An exhaustive analysis is carried out from the project configuration and its impact on the environment to the management of the building.

The main aspects discussed are:

- Management: user management, maintenance.
- Materials: design, quality, safety.
- Transportation: proximity to services, accessibility
- Waste
- Water: Maintenance, consumption control, recycling, etc
- Health and Wellness: Natural lighting, air quality, etc.
- Pollution: soil, water, air. Flooding, global warming.
- Energy: Energy management, CO2 emissions, maintenance.
- Land use and ecology: reuse of soils.

## Environmental risk report

- Flood risk assessment: River, tidal, surface water, groundwater, sewage and infrastructure failure.
- Climatic impact evaluation: sea level rise, temperature increase, precipitation reduction, drought.

## Report ESM

- Environmental criteria.
- Social criteria.
- Management criteria.

## Pre-evaluation for BREEAM certification

- Key performance indicators.
- Improvement strategy and investment to be carried out.
- Costs in the certification process.
- Possible qualification.





Arona (Santa Cruz de Tenerife)

- **Location:**  
C/ Juan Carlos I, 28. Los Cristianos.
- **Type of project:**  
4 star Hotel.
- **Service:**  
Environmental Due Diligence.



León

- **Location:**  
C/ Cofradía del Ciento 2.
- **Type of project:**  
Elderly residence.
- **Service:**  
Environmental Due Diligence.



Barcelona

- **Location:**  
C/ Córcega, 273 - 277 y 279.
- **Type of project:**  
Office building.
- **Service:**  
Assistance formalities Next Generation.



Marbella (Málaga)

- **Location:**  
C/ Violeta, s/n. Andalucía Garden Club.
- **Type of project:**  
4 star Hotel.
- **Service:**  
Environmental Due Diligence.



Alcalá de Henares (Madrid)

- **Location:**  
El Olivar de Alcalá de Henares.
- **Type of project:**  
Building of 128 apartments, parking, storage rooms and swimming pool.
- **Service:**  
Environmental Due Diligence.



Barcelona

- **Location:**  
Plaza Urquinaona, 1. H10 Urquinaona.
- **Type of project:**  
4 star Hotel.
- **Service:**  
Environmental Due Diligence.



# Sustainability

**BREEAM** is a tool for evaluating the sustainability of buildings, which has been developed by the Building Research Establishment (BRE) in the United Kingdom and allows us to measure the degree of environmental sustainability in buildings.

We have a professional team that masters the key concepts of the methodology and the certification system after passing specific official training. **aLL Global Project Management** as a company associated with **BREEAM**, is committed to the principles and good practices of sustainable construction, accrediting to the certifying body training in the field of sustainability annually.

The **Passivhaus**, or passive house, is a construction standard that combines high interior comfort with very low energy consumption.

**aLL Global Project Management** has carried out projects under the Passivhaus label.

The main features are the use of bioclimatic architecture adapted to the region of home construction, the use of heat recovery systems and renewable energy, among many other pioneering technologies in sustainable construction.

*We bet on  
sustainability*



# Services and Bank Entities

**Solvía** //ABANCA  **Santander** **BBVA** **Popular**

**Bantierra** **bankinter.** **Liberbank** **Bankia**

 **Servihabitat**

 **InmoCaixa**

 **Sareb**

 **EUROVAL**

 **aliseda**  
Inmobiliaria

 **Divarian**

 **BuildingCenter**

 **Anticipa**  
Real Estate

 **HAYA**  
REAL ESTATE

## Our clients

One of our main goals is to offer our clients the highest quality at all times and ensure that they are satisfied with their choice. We know that we can only achieve business success by offering the highest level of attention and unbeatable quality of service.



# Developer Companies



# Developer Companies





### **MADRID**

C. Poeta Joan Maragall, 23  
28020 - Madrid  
**(+34) 911 890 564**

### **BARCELONA**

Avda. de les Corts Catalanes, 9  
08173 - Sant Cugat del Vallès  
**(+34) 935 530 880**

### **PAMPLONA**

C. Arcadio María Larraona, 1  
31008 - Pamplona  
**(+34) 948 203 156**

### **VALLADOLID**

Pza. Mayor, 8  
47001 - Valladolid  
**(+34) 910 782 318**

### **A CORUÑA**

Calle Copérnico, 6  
15008 - A Coruña  
**(+34) 881 065 872**

### **MÁLAGA**

Plaza de la Solidaridad, 12  
29002 - Málaga  
**(+34) 951 941 769**

### **VALENCIA**

Avda. Cortes Valencianas, 39  
46015 - Valencia  
**(+34) 935 530 880**

### **CANARY ISLANDS**

38632 - Tenerife  
**(+34) 935 530 880**

